

# Monitoring social, economic and geopolitical events through Big Data

48th World Continuous Auditing  
and Reporting Symposium

Tomasa Rodrigo, September 2020

# Index

- 01 Opportunities in the digital era. Big Data at BBVA Research
- 02 Geopolitics, Trade and Spill overs
- 03 Big Data indicators to monitor the economy in Real Time and High Definition

01

Opportunities in  
the digital era.  
Big Data at  
BBVA Research

## Traditional data could not answer some relevant questions



Geopolitical events



Political events and social reaction



Natural disasters and epidemics



The use of **Big Data** and **Data science** techniques allows us to quantify these trends

## New framework in the digital era...



> New availability  
of data



> Combination of historical  
data with real time data



> Better and faster  
infrastructure



> Advanced data science  
techniques and algorithms



> New answers to  
old questions



> Higher computational abilities  
to face more data granularity

## ...which needs the development of new competences to take advantage of it



Making the right questions



Developing the data management and programming capabilities to work with large-scale datasets



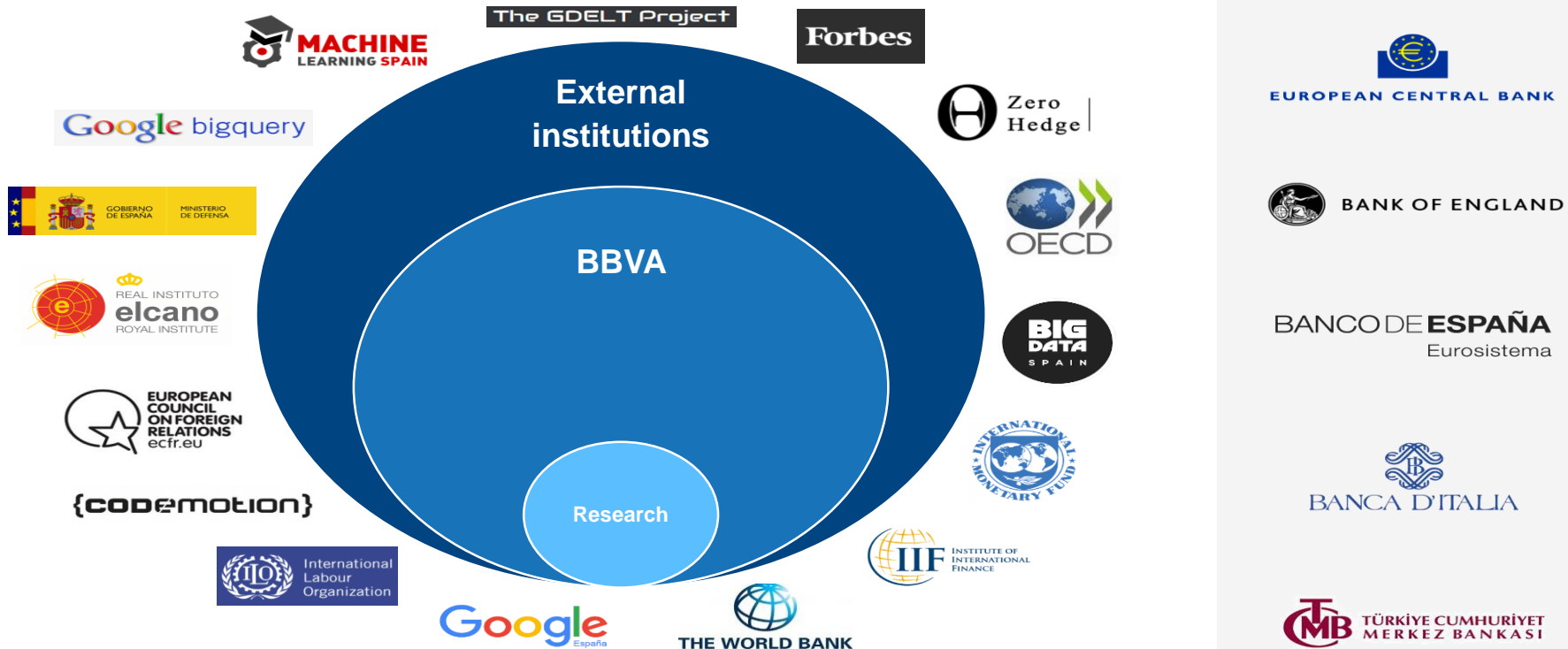
Deepening the statistical and econometric skills to analyze and deal with high-dimensional data



Interpreting the results: summarize, describe and analyze the information

New data may end up changing the way in which economists approach empirical questions and the tools they use to answer them

# Internal and external diffusion of what we do at BBVA Research



# 02

## Geopolitics, Trade and Spill overs



# Text as a key source of information to enrich analysis

**80%** of the total amount of web pages on the internet is given by textual or unstructured data



The potential use of textual information and text sources improves the understanding of the social, economic and financial systems



**Text mining**  
to extract meaning from strings of letters



It helps us to understand what drives monetary policy decisions

20%

of used data

80%

of available data



# What is GDELT?

## Global Database on Events Location and Tone

Open database of human society  
from every corner of the globe  
dating back to 1979 ...

... including over 300 events  
around the world and more than  
30000 themes...

... georeferenced across  
the entire planet...

...and collecting emotions  
using some of the most  
sophisticated algorithms

# GDELT database and sentiment analysis

$$\text{Average tone} = \frac{\sum \text{Positive words} - \sum \text{Negative words}}{\sum \text{Total words}}$$



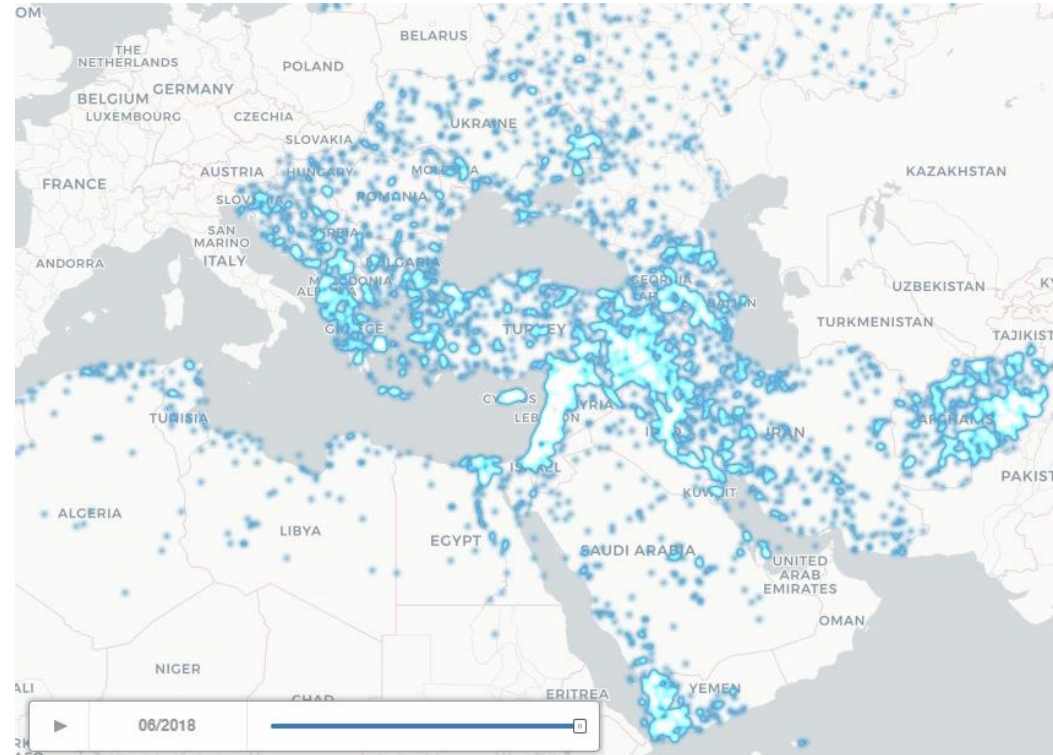
## Global Content Analysis Measures (GCAM)

**40** different **sentiment dictionaries**  
to capture  
more than **2300 emotions and dimensions**  
with a value score

# Tracking Geopolitics on real time

Is useful to identify the main hot spots and potential spillovers

## CONFLICT INTENSITY MAP 2017-18 (NUMBER OF CONFLICTS/ TOTAL EVENTS)

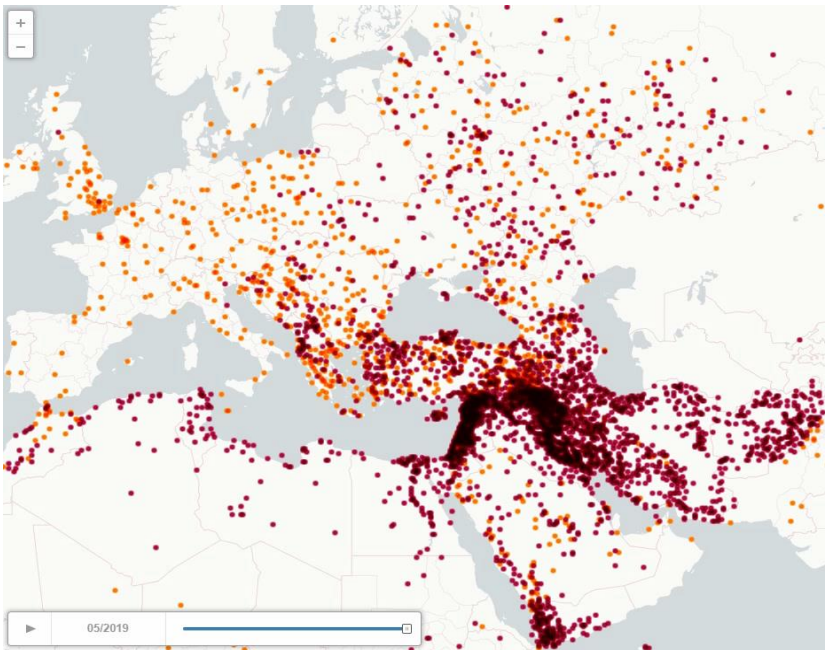


More detailed information can be found [here](#)



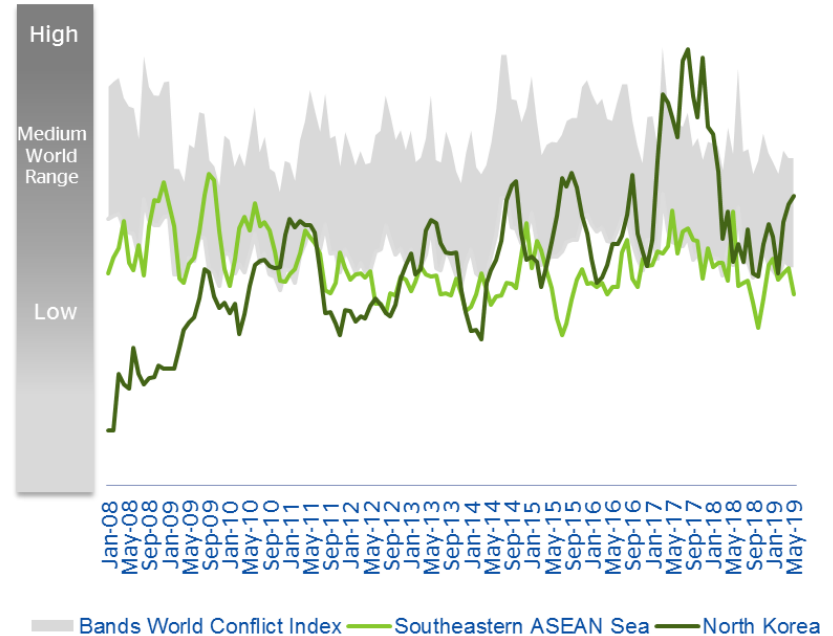
## ...to the current “hot” spots...

### BBVA RESEARCH REFUGEES FLOWS MAP IN 2015-19 NUMBER OF MEDIA CITATIONS ABOUT REFUGEES' INFLOWS AND OUTFLOWS



Source: [www.gdelt.org](http://www.gdelt.org) & BBVA Research

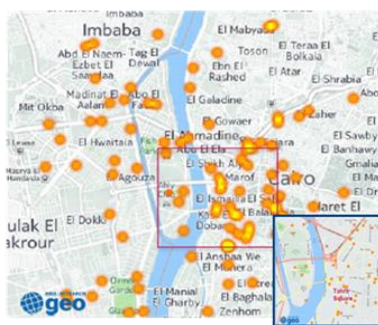
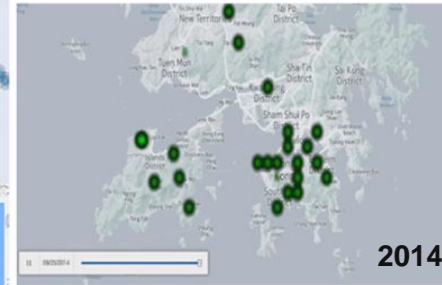
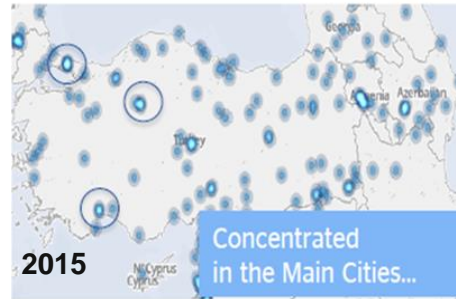
### BBVA RESEARCH ASIA CONFLICT INTENSITY INDEX 2008-19





# ... in “high definition”

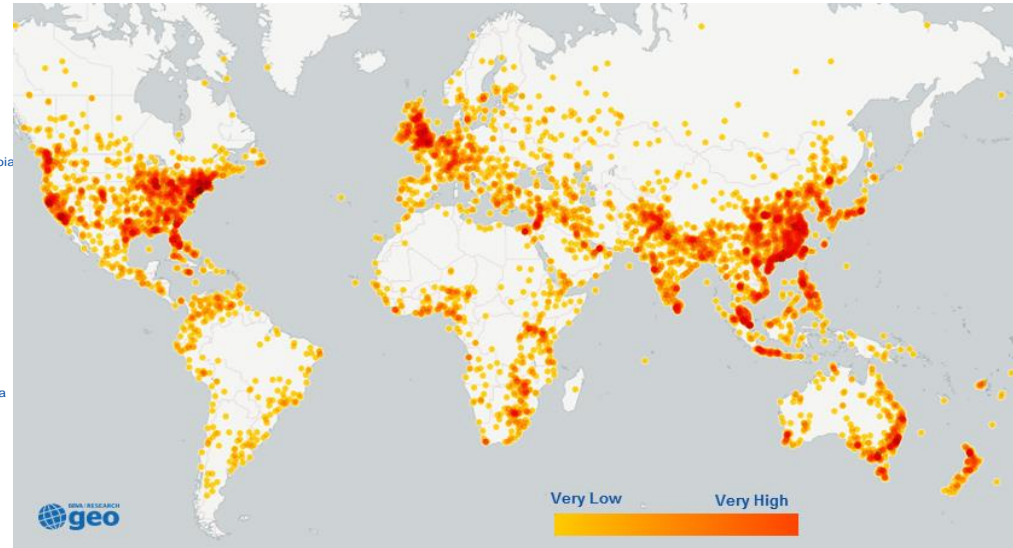
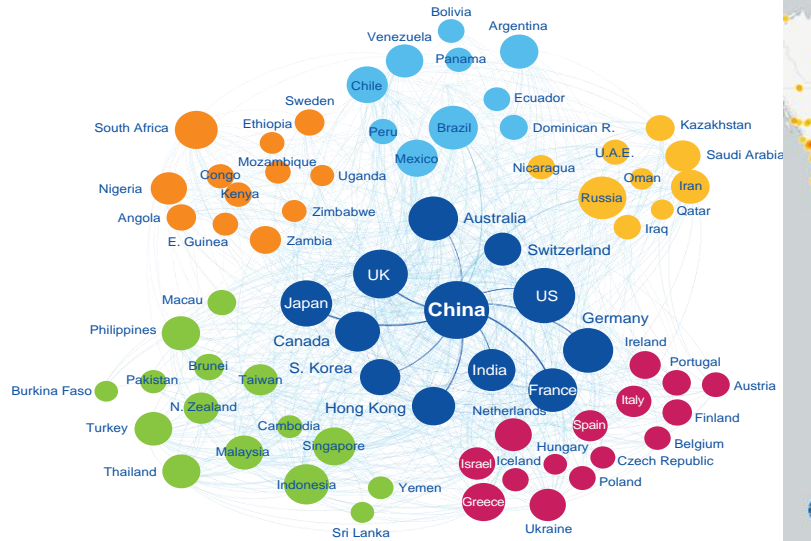
## SOCIAL UNREST EVENTS ACROSS THE WORLD: CAIRO, ISTANBUL AND HONG KONG CASES PROTEST EVENTS





# Exploring spillover effects: from the China's links with the rest of the world...

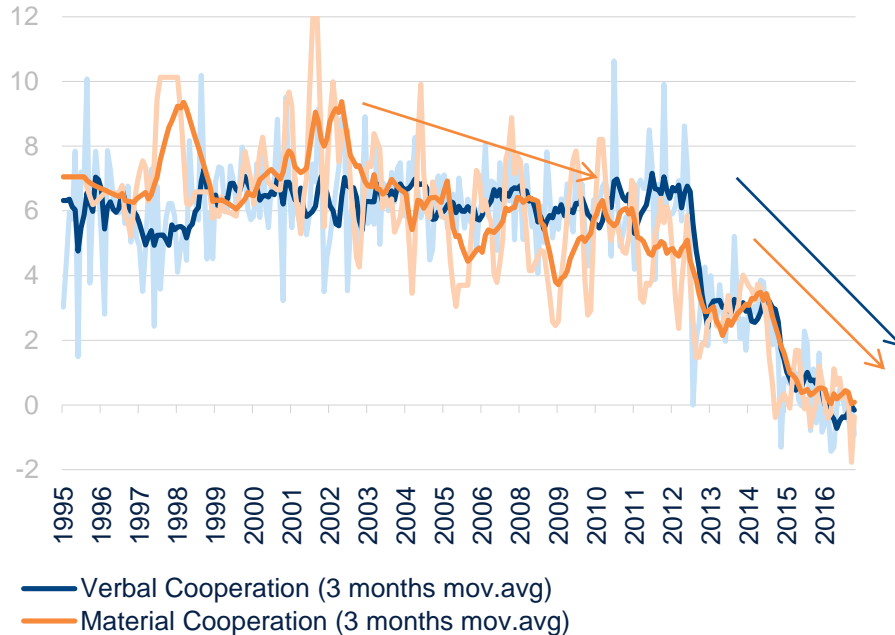
## CHINESE SLOWDOWN: THE COUNTRY NETWORK AND THE MEDIA PERCEPTION



- Financial & Trade lines impaired (Main trade partners)
- Activity Impact in Europe
- Impact on commodity Exporters from Latam
- Activity Impact in EM Asia
- Conversation on Oil demand
- Impact on commodity Exporters from Africa

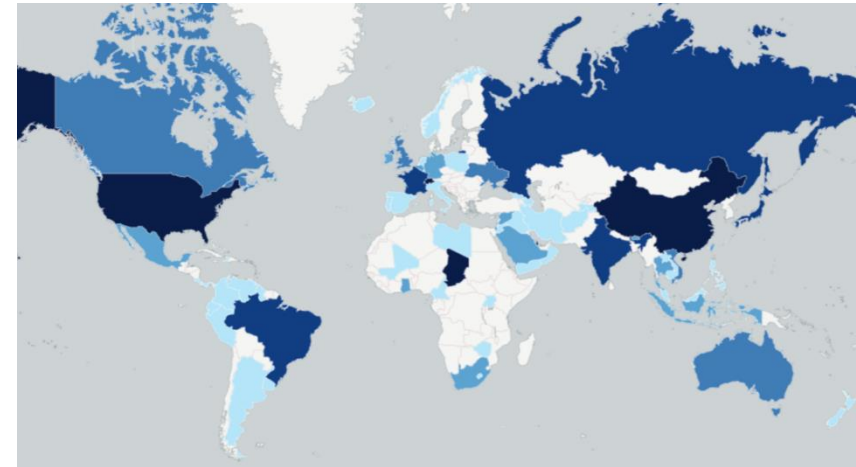
# ... to the world trade evolution from an historical perspective

## BBVA RESEARCH WORLD TRADE SUPPORT INDEX (TONE & COVERAGE VERBAL COOPERATION AT WTO)

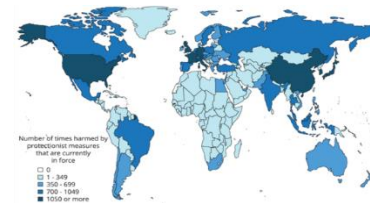


Source: [www.gdelt.org](http://www.gdelt.org) & BBVA Research

## BBVA RESEARCH TRADE SUPPORT INDEX CHANGES 2008-17



### THE GLOBAL INCIDENCE OF PROTECTIONISM 2008-2015 (GLOBAL TRADE ALERT)



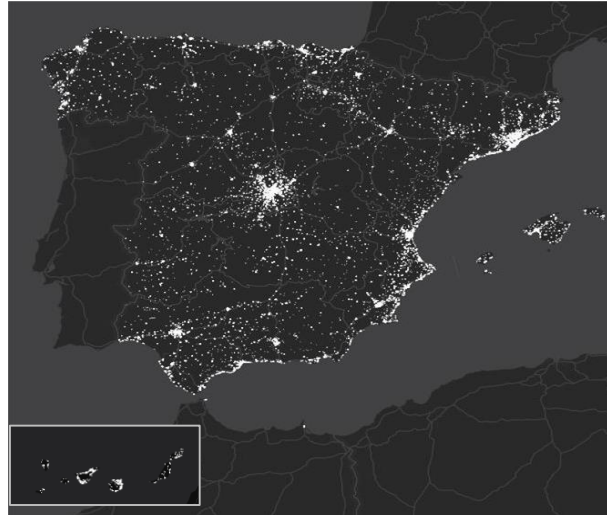
More detailed information can be found [here](#)



# 03

## Big Data indicators to monitor the economy in Real Time and High Definition

## Internal databases: working with aggregated and anonymized BBVA Data to have indicators in real time and high definition



710M card transactions  
from 1M PoS, made by  
53M people,  
representing €43.000M



4 billion card transactions  
made by 14M people



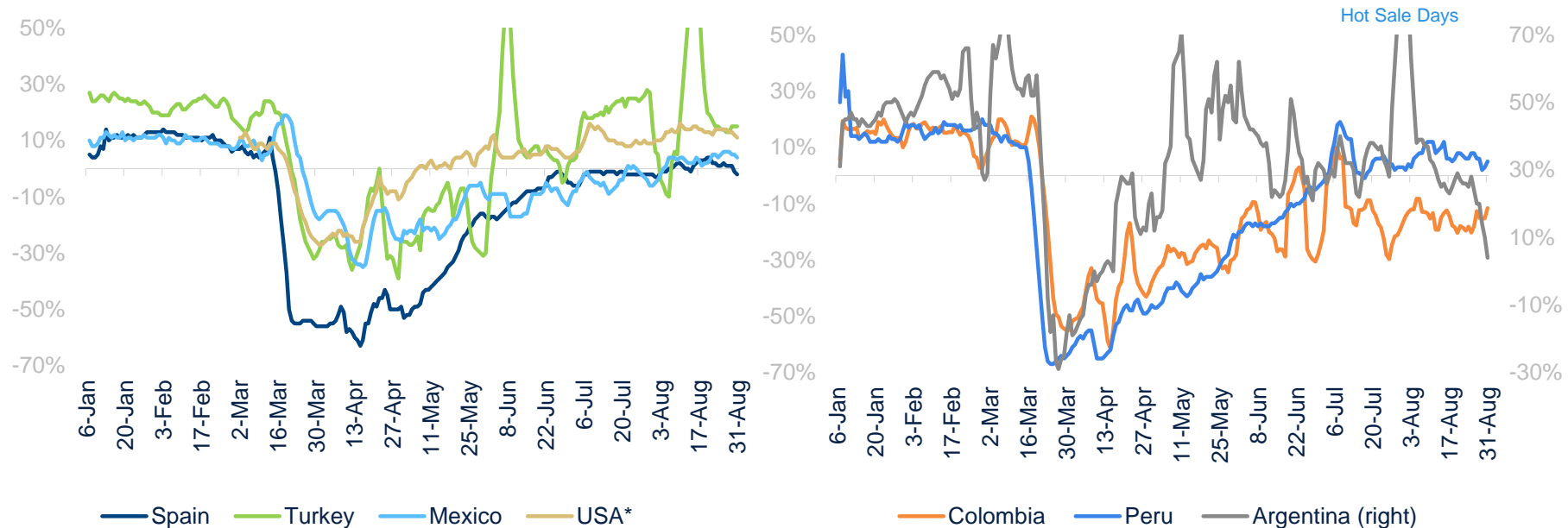
1.500M card transactions  
from 1,1M PoS, made by  
88M people, representing  
€41.000M

**+ US, Colombia, Perú, Argentina**

# Positive growth in USA, Turkey, Mexico, Peru and Argentina. Spain registered negative growth rates at the end of August, while Colombia continued stagnant

## BBVA RESEARCH BIG DATA CONSUMPTION INDICES

(Total consumption by card, % YoY, 7D cumulative)



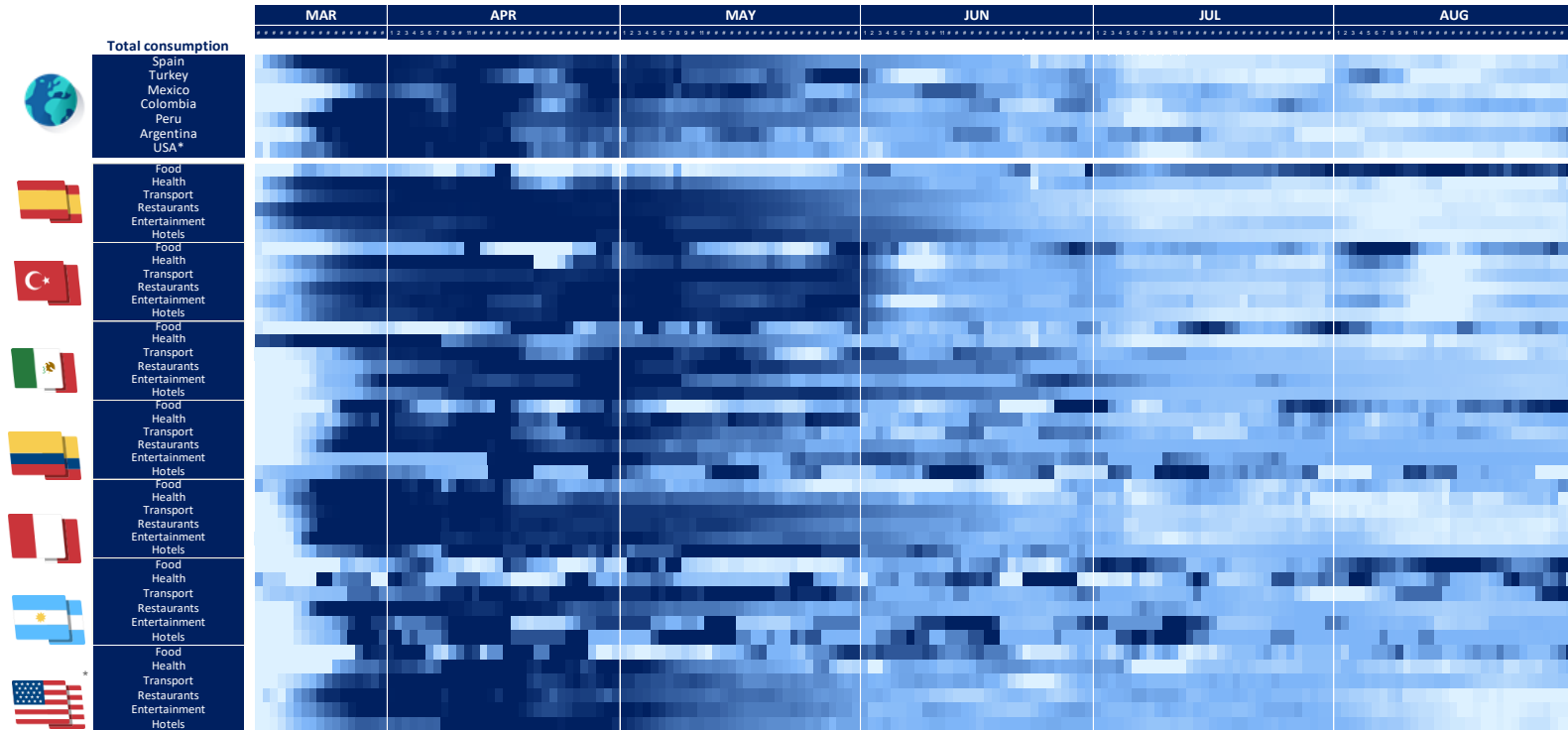
Interactive charts with weekly updated information can be found [here](#) and more detailed information can be found [here](#)

Source: BBVA Research. \* Proxied by USA Sunbelt

Spending at BBVA POS by BBVA and non-BBVA customers plus spending by BBVA customers at non-BBVA POS. This data considers final expenditures, so not intermediate consumption is included. Therefore, the correspondence with national accounts household consumption is not fully equivalent. More detail about the data could be found in the following [link](#).

# Consumption Diffusion Heat Map: August led some recovery by sector of activity in Peru, USA, Turkey and Spain

## BBVA RESEARCH BIG DATA CONSUMPTION HEAT MAP (YoY, 7D cumulative)



\*Proxied by USA Sunbelt. Source: BBVA Research.

Lower Growth Higher Growth

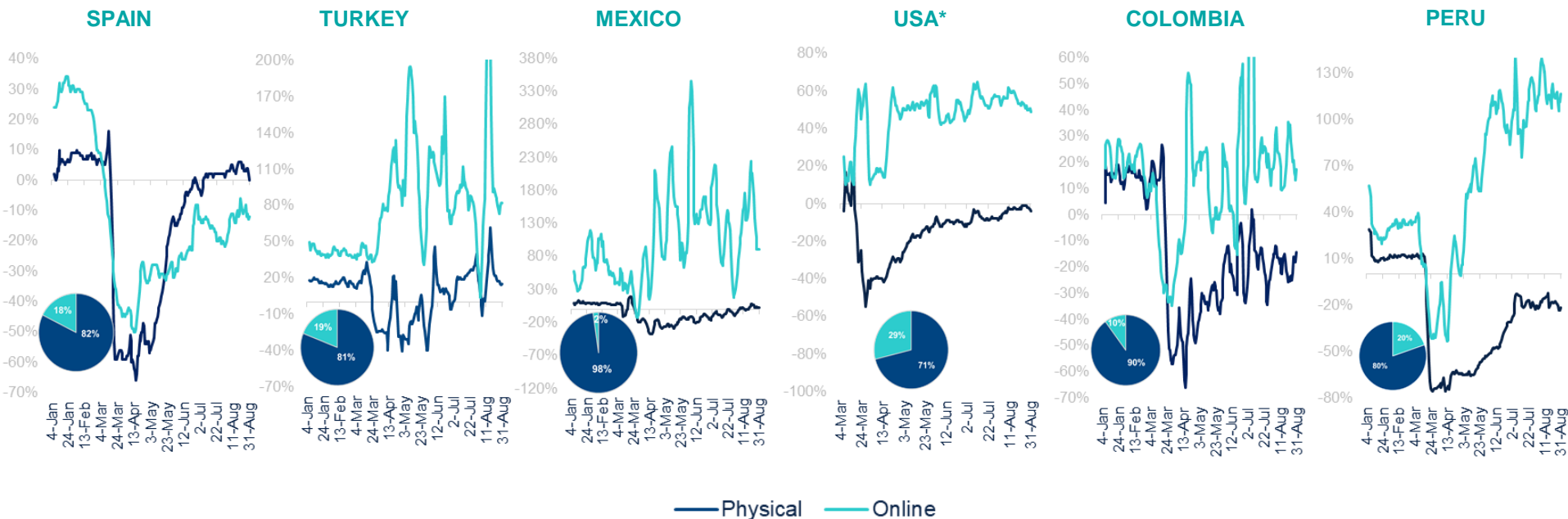
Series are coloured according to the history of each series since March 20 until the end of the series. The darker blue represents the lower 90% percentile and the lighter one represents the upper 10% percentile.



# Technology matters: the gap between e-commerce growth and physical purchases remained. Online sales are increasing in all the countries, expect in Spain given the importance of travel expenditures

## BBVA RESEARCH BIG DATA CONSUMPTION INDICES: PHYSICAL VS ONLINE

(Total consumption by Point of Sales. % YoY, 7D cumulative. Pie chart reflects the proportion of online and physical purchases in 2019)

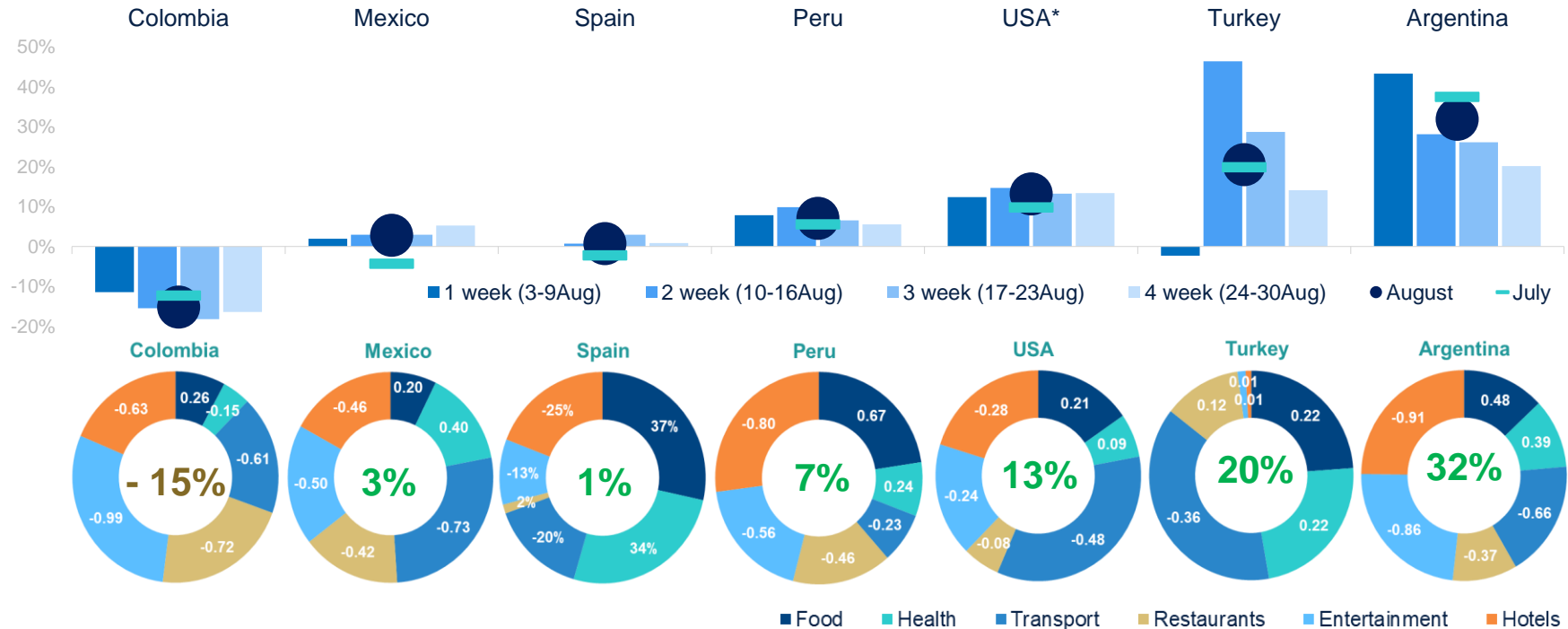


Source: BBVA Research. \* USA = Proxied by USA Sunbelt.



# No big differences in card consumption patterns during August compared with July

**BBVA RESEARCH BIG DATA CONSUMPTION INDICES: TOTAL CONSUMPTION EVOLUTION IN AUGUST AND SECTORIAL DISTRIBUTION\* DURING THE MONTH** (Bar chart: % YoY by week and month. Pie chart: % YoY by sector in August)



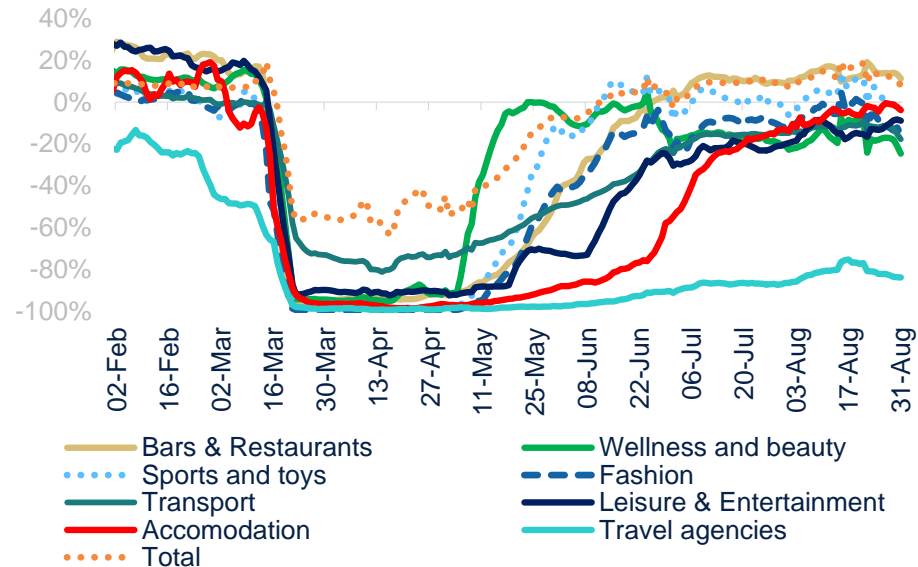
\*It should be taken into account there are other categories of consumption not considered in the pie chart, so the total consumption is not equal to the average of the components of the chart

Source: BBVA Research. \* USA = Proxied by USA Sunbelt

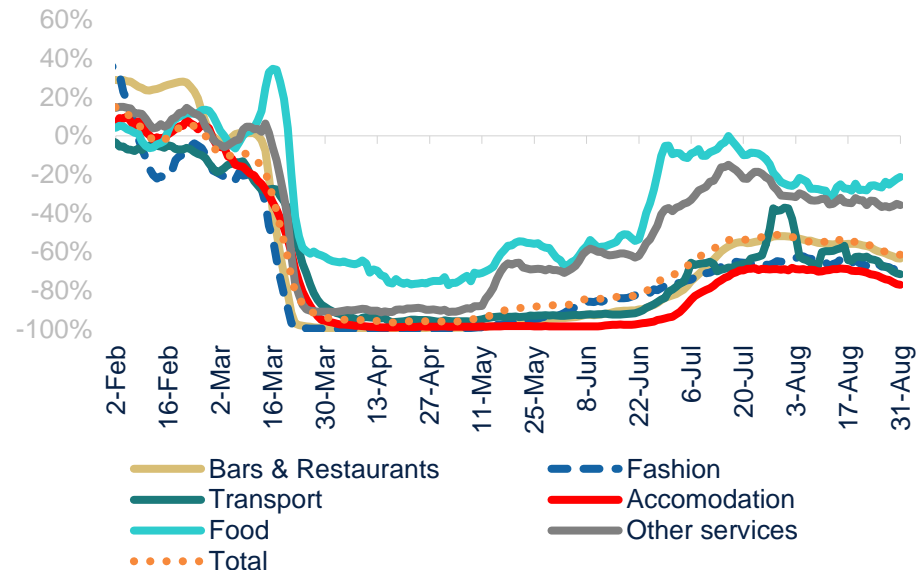
# The Spanish recovery slowed among national consumers. Foreign expenditure is still stagnant

## SPAIN: AVERAGE EXPENDITURE BY SECTOR (% YoY, 7D cumulative)

### NATIONAL



### FOREIGN



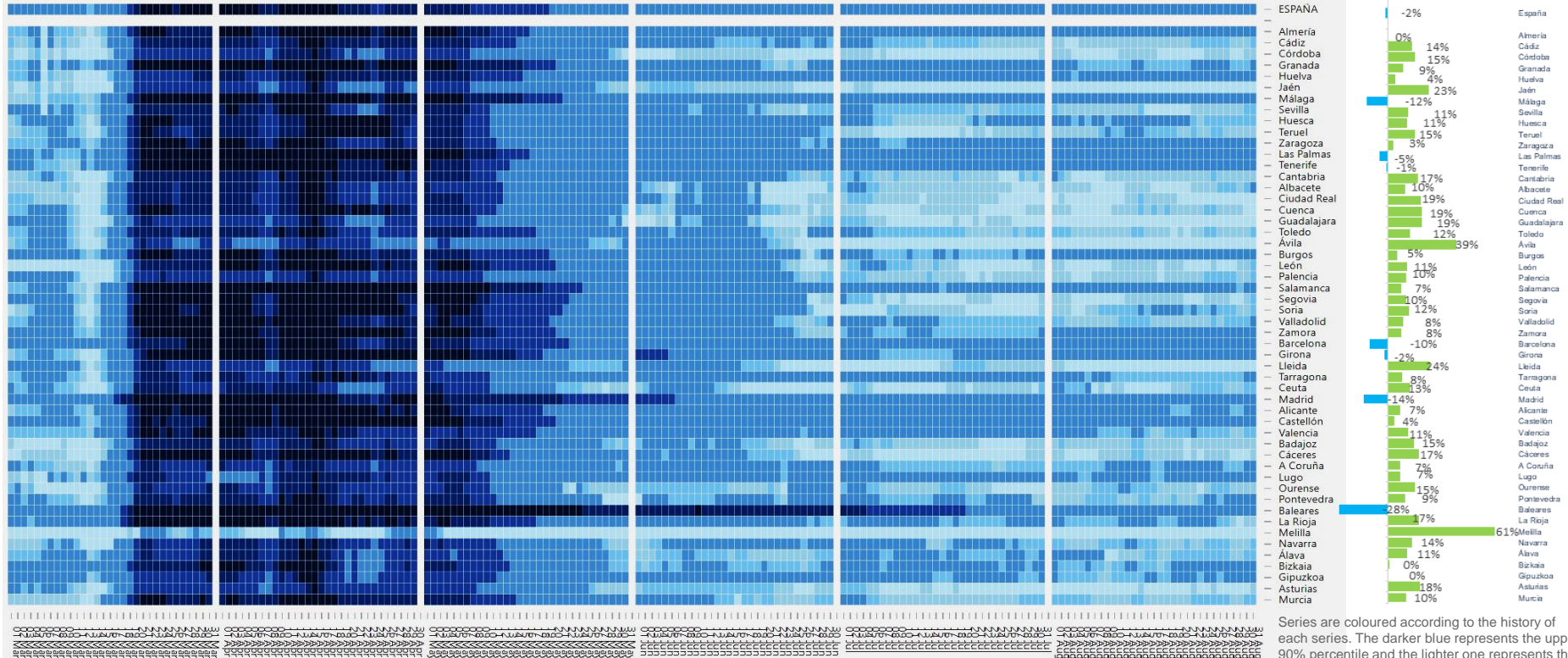
More detailed information can be found [here](#)

# 43/50 Spanish provinces are growing despite the stagnation of foreign expenditure

## SPAIN: TOTAL AVERAGE WEEKLY EXPENDITURE BY PROVINCE\*

(Considering national and foreign cards and physical and online purchases . % YoY, 7D cumulative)

## 25-31 AUG EXPENDITURE (% YOY)



Source: BBVA Research

Lower Growth

Higher Growth

Series are coloured according to the history of each series. The darker blue represents the upper 90% percentile and the lighter one represents the lower 10% percentile. Expenditure by BBVA client and other Spanish cards registered in TPV BBVA

# The BBVA Big Data for investment shows a high correlation with the main investment aggregates, but giving us some anticipation to have the more updated view of the Business Cycle...

## TURKEY: GBBVA BIG DATA INVESTMENT INDICES

(28-day cum. YoY real )

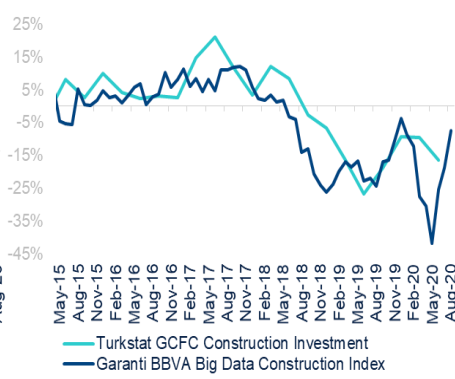
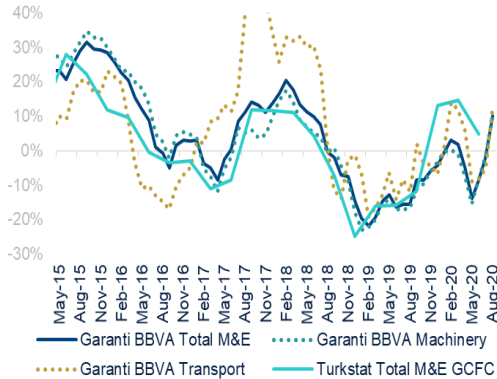
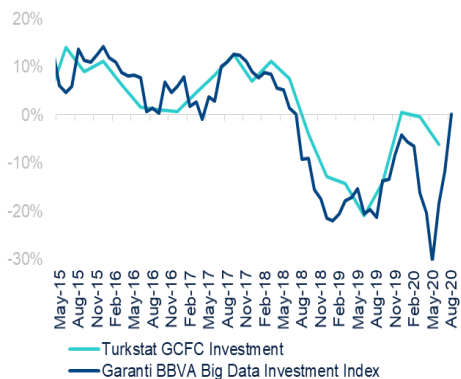
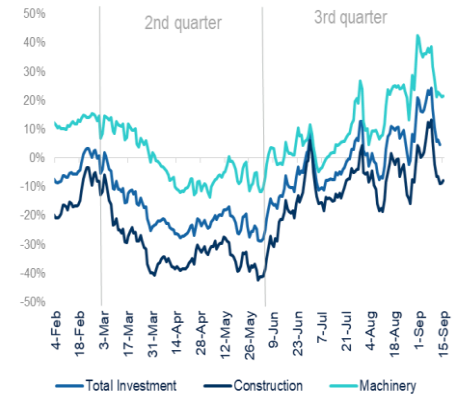
## TURKEY: BBVA BIG DATA INVESTMENT

(28-day cum. YoY nominal in Invest.)

### Total Investment

### Maquinery & Equipment

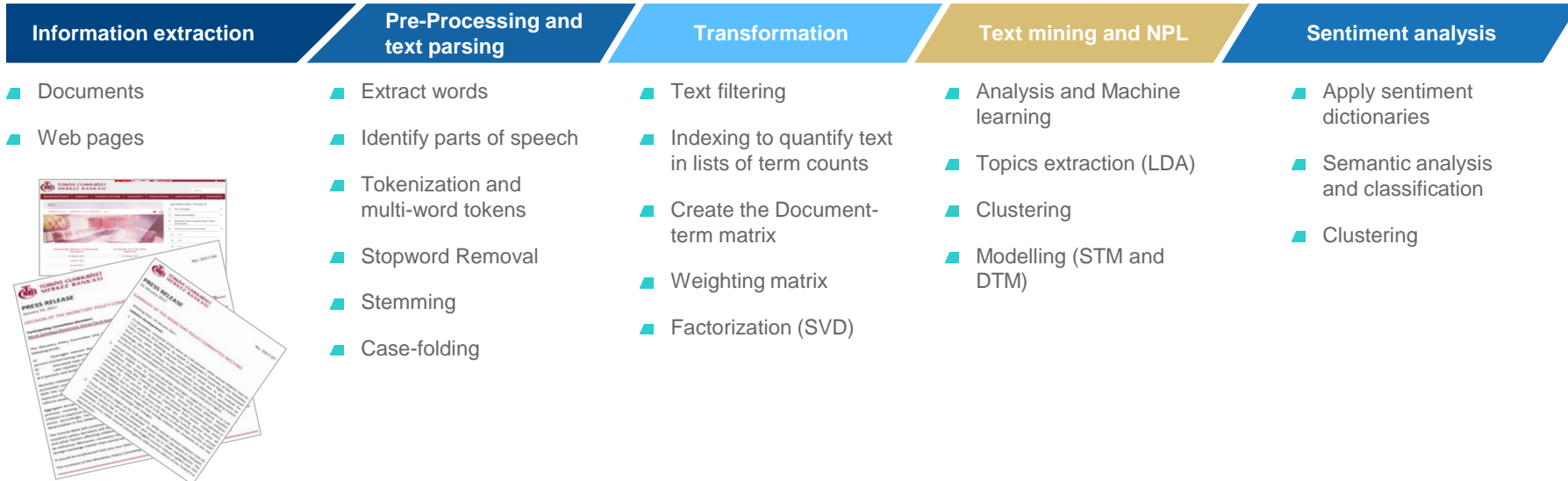
### Construction



The "High Definition" sectorial information can help us to track the evolution of sectors in detail and differentiate different shocks and to analyze regional economics to see how the provinces react to such shocks

# External databases: web scrapping and NPL techniques

Text mining makes information extraction from huge volumes of data easier and structures the information as important facts, key terms or persons.

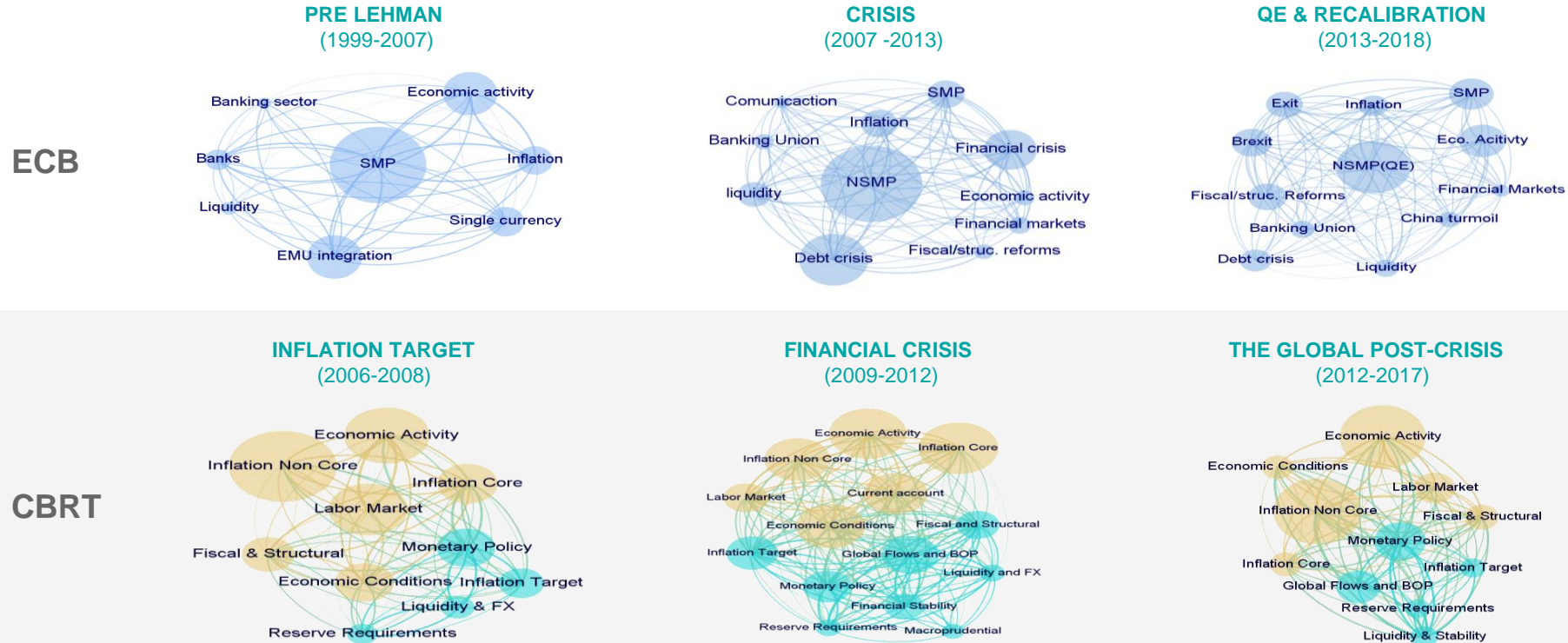






# Understanding the Interconnectedness between Developed and Emerging Central Banks

## MONETARY POLICY IN DEVELOPED ECONOMIES AND RESPONSE IN THE EMERGING MARKETS (NETWORKS)



You can find us at:



[www.bbvarsearch.com](http://www.bbvarsearch.com)



BBVA Research  
Tomasa Rodrigo



@BBVAResearch  
@TomasRodrigo

# Thank you!



# Monitoring social, economic and geopolitical events through Big Data

48th World Continuous Auditing  
and Reporting Symposium

Tomasa Rodrigo, September 2020